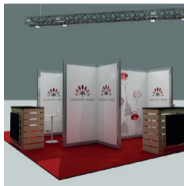
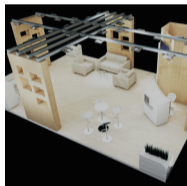
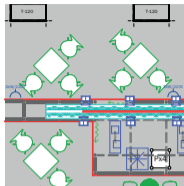


# FAIR STANDS CATALOGUE



[www.iec.bg](http://www.iec.bg)

Successful participation in a specialized trade exhibition involves several stages, from defining the required area and determining the position of the stand in the exhibition hall to designing the stand and choosing the most suitable vision for the brand being presented.

By using creative ideas, colour and graphic accents and different materials, your stand can acquire an individual appearance. Leading concept is to present most successfully your company's business and attracting the attention of visitors during the exhibition.



# INTER EXPO CENTER OFFERS THE SERVICES OF A PROFESSIONAL TEAM TO HELP YOU DESIGN AND CONSTRUCT A UNIQUE EXHIBITION STAND, BOTH IN THE COUNTRY AND ABROAD.



## We provide:

- complete service that includes everything: from the initial design and planning of the participation in the exhibition to installation, technical support during the exhibition and dismantling of the stand;
- design and construction of various types of exhibition stands made of modular elements or made to individual orders;
- variety of equipment and furniture;

The catalog presents basic options for building exhibition stands, which through customization can perfectly represent your brand and meet your needs.



# PREPARATION FOR PARTICIPATION IN AN EXHIBITION INVOLVES SEVERAL MAIN STAGES:

## 1. Choosing the right location

The appropriate size and type of the stand is determined according to the products to be exhibited:

- inline stand (1-side open stand)
- corner stand (2-side open stand)
- peninsula stand (3-side open stand)
- island stand (4-side open stand)

## 2. Defining the budget for participation

Defining your budget is crucial when determining the size and accessibility of your stand.



### 3. Choosing the design

The stand models included in the catalog are divided into main groups as follows:

- Stand Standard and stand Comfort, **price per sq.m** (page 7)

#### Variants:

- Standard stand with "Octanorm" construction (pages 8)
- Standard stand with "Octanorm" construction and branding on the walls (pages 9 to 14)
- Stands with "Maxima" construction (pages 15 to 21)
- Customized construction stands made of pressed particle boards (page 22)

### 4. Design customization in line with the products to be exhibited.

Add your brand, messages and various interactive elements for an exhibition stand vision which matches your company.



## CUSTOMIZED VISION BASED ON CONSTRUCTION SYSTEMS

We are specialized in the design of individual exhibition stands based on construction systems (Octanorm system and Maxima system). In addition, we are constantly developing ideas, techniques and elements to customize each stand.



**Starting with a ready-made design, you save time and efforts by benefiting directly from our long-standing experience in organizing and conducting successful specialized exhibitions.**

## stand **STANDART**

### Includes:

- floor covering - carpet
- power supply 220V/2 kW
- extension cord 3 sockets – 1 pce.
- construction of a stand with „Octanorm“
- partition walls
- info desk
- interview table – 1 pcs.
- chrome chair – 4 pcs.
- 1 lighting fitting per 3 m<sup>2</sup>



**37** EUR /m<sup>2</sup>

## stand **COMFORT**

### Includes:

- floor covering - carpet
- power supply 220V/2 kW
- extension cord 3 sockets – 1 pce.
- construction of a stand with „Octanorm“
- partition walls
- info desk with branding
- glass interview table – 1 pcs.
- white chair – 4 pcs.
- truss with LED surchlight
- fabric frame on the back wall
- hanging PVC sign
- construction /two sides/



**62** EUR /m<sup>2</sup>

■ The project does not include the graphic design of the visions, they have to be sent by the exhibitor

# VARIANT **1**

6x3 m/18 m<sup>2</sup>

## Two sides open corner stand

„Octanorm“ construction 2 walls

### Includes:

- construction of a stand with „Octanorm“ partition walls
- floor covering – carpet, anthracite color
- power supply – 220 V/2 kW
- extension cord 3 sockets – 1 pce.
- low showcase 50/100/80 cm with doors 2pcs.
- interview table – 1 pcs.
- chrome chair – 4 pcs.
- 1 lighting fitting per 3 m<sup>2</sup>
- standard stand inscription – one above each open side

**TOTAL 732,00\*** EUR without VAT

\*The construction cost is for the specified square meters and content.  
The value will be recalculated for other square meters.

\*The project does not include the graphic design of the visions,  
they have to be sent by the exhibitor



# VARIANT **2**

6x3 m/18 m<sup>2</sup>

## Two sides open corner stand

"Octanorm" construction 2 walls

### Includes:

- construction of a stand with „Octanorm“ partition walls
- floor covering – carpet, anthracite color
- power supply – 220 V/2 kW
- extension cord 3 sockets – 1 pce.
- low showcase 50/100/80 cm with doors 2pcs.
- interview table – 1 pcs.
- chrome chair – 4 pcs.
- 1 lighting fitting per 3 m<sup>2</sup>
- foil branding

**TOTAL 1460,00\*** EUR without VAT



\*The construction cost is for the specified square meters and content.  
The value will be recalculated for other square meters.

\*The project does not include the graphic design of the visions,  
they have to be sent by the exhibitor

# VARIANT **3**

6x3 m/18 m<sup>2</sup>

## Two side open corner stand with storage and superstructure + FOIL BRANDING

“Octanorm” construction

### Includes:

- construction of a stand with „Octanorm” partition walls
- foil branding on the walls and storage
- curved info desk with branding 1pce.
- comatex superstructure with branding
- floor covering – carpet, anthracite color
- power supply – 220 V/2 kW
- extension cord 3 sockets – 1 pce.
- interview table – 1 pcs.
- upholstered chair, black – 4 pcs.
- 1 lighting fitting per 3 m<sup>2</sup>

**TOTAL 1503,00\*** EUR without VAT



\*The construction cost is for the specified square meters and content.  
The value will be recalculated for other square meters.

\*The project does not include the graphic design of the visions,  
they have to be sent by the exhibitor

# VARIANT **4**

6x3 m/18 m<sup>2</sup>

## Two side open corner stand

Two Octanorm walls with textile

### Includes:

- construction of a stand with „Octanorm“ partition walls
- fabric frames on the walls
- PVC sign on the farm construction
- white info desk with folio branding
- truss with LED surchligh
- negotiating table
- black upholstered chair – 4 pcs.
- high chair - 1 pcs.
- floor covering – carpet, anthracite color
- power supply 220V/2 kW, extension cord 3 sockets – 1 pce.

**TOTAL 2064,00\*** EUR without VAT



\*The construction cost is for the specified square meters and content.  
The value will be recalculated for other square meters.

\*The project does not include the graphic design of the visions,  
they have to be sent by the exhibitor

# VARIANT 5

6x3 m/18 m<sup>2</sup>

## Row stand one side open

Three Octanorm walls with textile branding

### Includes:

- construction of a stand with „Octanorm“ partition walls
- fabric frames on the walls
- PVC sign on the farm construction
- white info desk with folio branding
- truss with LED surchlight
- negotiating table
- black upholstered chair – 4 pcs.
- high chair – 1 pcs.
- floor covering – carpet, anthracite color
- power supply 220V/2 kW, extension cord 3 sockets – 1 pce.

**TOTAL 2659,00\*** EUR without VAT

\*The construction cost is for the specified square meters and content.  
The value will be recalculated for other square meters.

\*The project does not include the graphic design of the visions,  
they have to be sent by the exhibitor



# VARIANT **6**

6x6 m/ 36 m<sup>2</sup>

## Island stand, four side open

„Octanorm“ construction + STRUCTUR construction

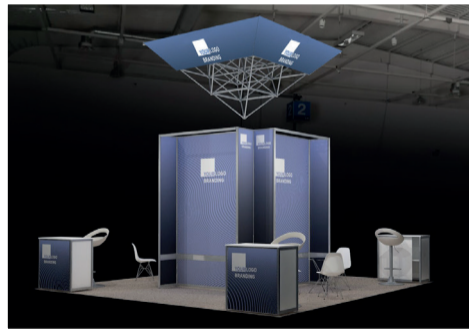
### Includes:

- construction of a stand and storage with „Octanorm“ partition walls
- foil branding on the walls
- white info desk with folio branding – 4 pce.
- structure construction with LED surchlight
- glass negotiating table – 2 pcs.
- luxury white chair – 8 pcs.
- high chair – 4 pcs.
- floor covering – carpet, anthracite color
- power supply 220V/2 kW, extension cord 3 sockets – 1 pce.

**TOTAL 3611,00\*** EUR without VAT

\*The construction cost is for the specified square meters and content.  
The value will be recalculated for other square meters.

\*The project does not include the graphic design of the visions,  
they have to be sent by the exhibitor



# VARIANT **7**

10x6 m/60 m<sup>2</sup>

## Island stand, four side open

"Octanorm" construction storage

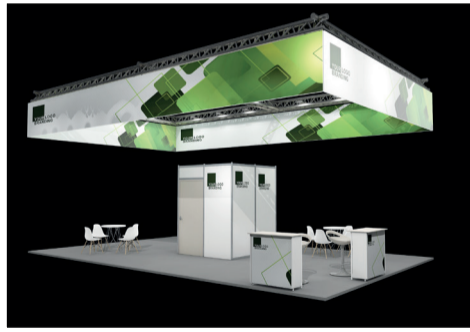
### Includes:

- construction of a stand and storage with „Octanorm“ partition walls
- floor covering – carpet, anthracite color
- truss with LED surchlight
- fabric frame on the farm construction /two sides/
- white negotiating table – 2 pcs.
- luxury white chair – 8 pcs.
- lighting info desk with textile branding – 2 pcs.
- high chair – 2 pcs.
- floor covering – carpet, anthracite color
- power supply 220V/2 kW, extension cord 3 sockets – 1 pce.

**TOTAL 6660,00\*** EUR without VAT

\*The construction cost is for the specified square meters and content.  
The value will recalculated for other square meters.

\*The project does not include the graphic design of the visions,  
they have to be sent by the exhibitor



# VARIANT 8

3x3 m/9m<sup>2</sup>

MAXIMA

## Includes:

- construction with "MAXIMA"
- floor covering – carpet, anthracite color
- power supply 220V/2 kW
- extension cord 3 sockets – 1 pce.
- white info desk with folio branding
- fabric frames on the walls
- LED surchlight
- negotiating table – 1 pcs.
- luxury white chair – 4 pcs.
- PVC sign on each open side

**TOTAL 1664,00\*** EUR without VAT



\*The construction cost is for the specified square meters and content.  
The value will be recalculated for other square meters.

\*The project does not include the graphic design of the visions,  
they have to be sent by the exhibitor

# VARIANT 9

5x3 m/15m<sup>2</sup>  
MAXIMA

## Includes:

- construction with "MAXIMA"
- floor covering – carpet, anthracite color
- power supply 220V/2 kW, extension cord 3 sockets – 1 pce.
- white info desk with folio branding
- fabric frames on the walls
- PVC sign on each open side
- LED surchligh
- high chair – 1 pcs.
- negotiating table – 1 pcs.
- luxury white chair – 4 pcs.

**TOTAL 2217,00\*** EUR without VAT



\*The construction cost is for the specified square meters and content.  
The value will be recalculated for other square meters.

\*The project does not include the graphic design of the visions,  
they have to be sent by the exhibitor

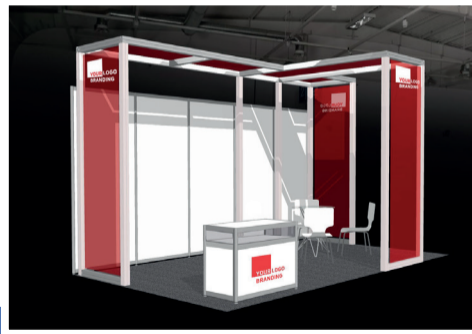
# VARIANT 10

5x3 m/15m<sup>2</sup>  
MAXIMA + OCTANORM

## Includes:

- construction with "Octanorm" and "MAXIMA"
- floor covering – carpet, anthracite color
- power supply 220V/2 kW
- extension cord 3 sockets – 1 pce.
- fabric branding on the walls
- low showcase 50/100/80 cm with branding
- LED searchlight
- glass table – 1 pce.
- white chair veneer – 4 pce.

**TOTAL 1781,00\*** EUR without VAT



\*The construction cost is for the specified square meters and content.  
The value will be recalculated for other square meters.

\*The project does not include the graphic design of the visions,  
they have to be sent by the exhibitor

# VARIANT **11**

6x6 m/ 36 m<sup>2</sup>

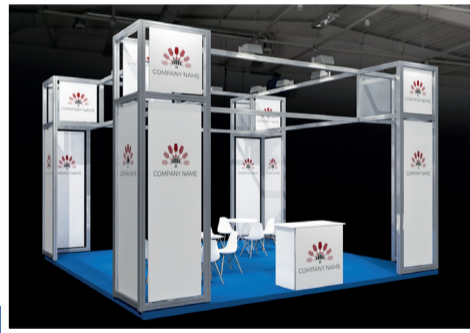
## Island stand, four side open

"MAXIMA" construction

### Includes:

- stand with construction "MAXIMA"
- fabric branding
- white interview table – 2 pcs.
- luxury white chair – 8 pcs.
- white info desk with folio branding
- high chair – 1 pcs.
- LED searchlight
- floor covering – carpet, anthracite color
- power supply 220V/2 kW,
- extension cord 3 sockets – 1 pce.

**TOTAL 3247,00\*** EUR without VAT



\*The construction cost is for the specified square meters and content.  
The value will be recalculated for other square meters.

\*The project does not include the graphic design of the visions,  
they have to be sent by the exhibitor

# VARIANT 12

6x6 m/ 36 m<sup>2</sup>

## Island stand, four side open

"MAXIMA" construction

### Includes:

- stand with construction "MAXIMA"
- fabric branding on the walls
- storage with wooden door
- pallet info desk – 4 pcs.
- high chair – 4 pcs.
- truss with LED surchlight
- floor covering – carpet, anthracite color
- power supply 220V/2 kW,
- extension cord 3 sockets – 1 pce.

**TOTAL 4941,00\*** EUR without VAT

*The stand is suitable for collective participation with the possibility of 8 workplaces.*



\*The construction cost is for the specified square meters and content.  
The value will be recalculated for other square meters.

\*The project does not include the graphic design of the visions,  
they have to be sent by the exhibitor

# VARIANT **13**

6x10 m/ 60 m<sup>2</sup>

## Island stand, four side open

"MAXIMA" construction

### Includes:

- stand with construction "MAXIMA"
- fabric branding on the walls
- upholstered furniture – 2 pcs.
- low table – 2 pcs.
- storage with wooden door and fabric branding
- LED surchlight
- floor covering – carpet, anthracite color
- power supply 220V/2 kW,
- extension cord 3 sockets – 1 pce.

**TOTAL 3912,00\*** EUR without VAT



\*The construction cost is for the specified square meters and content.  
The value will be recalculated for other square meters.

\*The project does not include the graphic design of the visions,  
they have to be sent by the exhibitor

# VARIANT 14

6x10 m/ 60 m<sup>2</sup>

## Island stand, four side open

"MAXIMA" construction

### Includes:

- stand with construction "MAXIMA"
- fabric branding on the walls
- upholstered furniture – 2 pcs.
- low table – 2 pcs.
- white info desk with folio branding – 10 pcs.
- leather high chair – 4 pcs.
- storage with wooden door and fabric branding
- LED surchlight
- floor covering – carpet, anthracite color
- power supply 220V/2 kW, extension cord 3 sockets – 1 pce.

**TOTAL 5362,00\*** EUR without VAT

\*The construction cost is for the specified square meters and content.  
The value will be recalculated for other square meters.

\*The project does not include the graphic design of the visions,  
they have to be sent by the exhibitor

*The stand is suitable for collective participation  
with the possibility of 14 workplaces.*



# VARIANT 15

6x9 m/ 54 m<sup>2</sup>

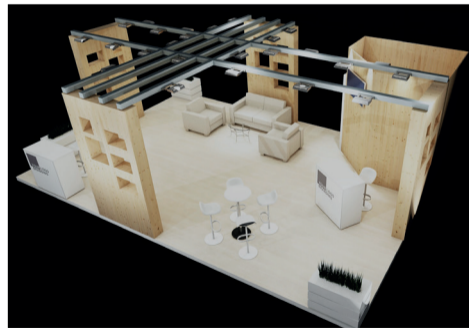
## Island stand, four side open

"MAXIMA" construction and chipboard

### Includes:

- stand with construction "MAXIMA" and chipboard
- floor covering – laminate
- chipboard columns
- low table – 1 pcs.
- upholstered furniture – 3 pcs.
- high chair – 6 pcs.
- high table – 1 pcs.
- power supply 220V/2 kW, extension cord 3 sockets – 1 pcs.
- white info desk with folio branding – 2 pcs.
- flower-stand – 2 pcs.
- LED surchlight

**TOTAL 8228,00\*** EUR without VAT



\*The construction cost is for the specified square meters and content.  
The value will be recalculated for other square meters.

\*The project does not include the graphic design of the visions,  
they have to be sent by the exhibitor

Contact us now to discuss **options and ideas for your exhibition stand project, fully tailored to your needs to promote your brand.**

Through a personalized design of your stand we will direct the audience attention to **your brand.**

**TOGETHER WE WILL MAKE YOUR STAND  
OUTSTANDING TO USE TO THE FULLEST  
EXTENT OF THE CAPABILITIES OF THE  
SPECIALIZED EXHIBITIONS.**



[www.iec.bg](http://www.iec.bg)